


The University of Roehampton International Summer School



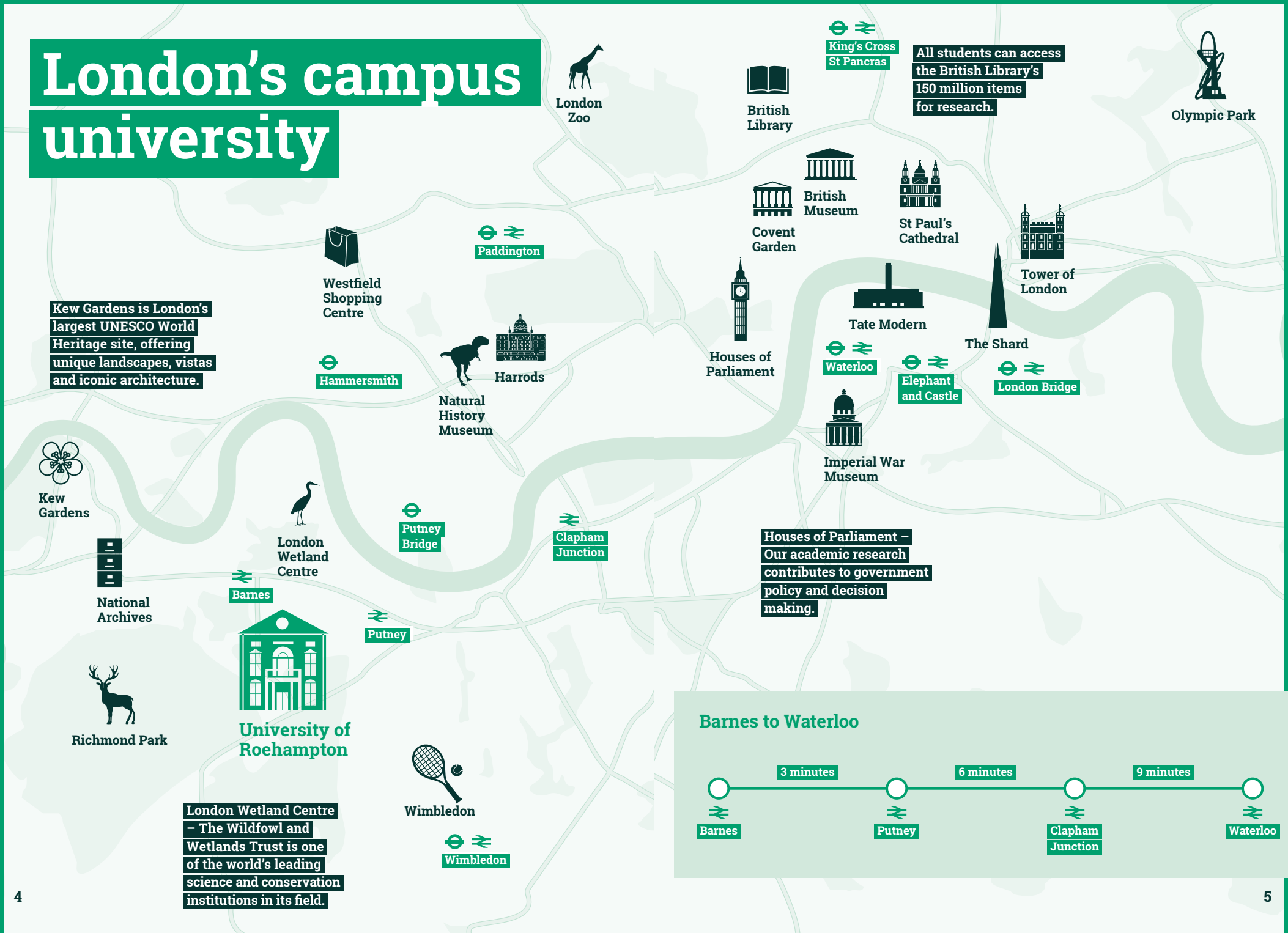


Welcome to Roehampton

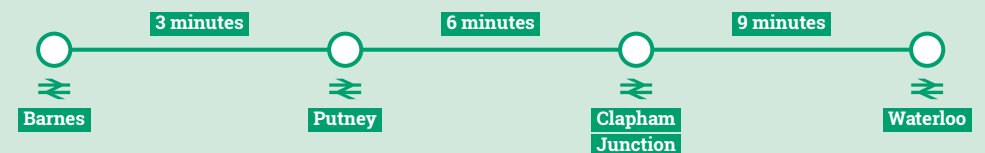
The University of Roehampton invites you to study abroad on our beautiful campus in south west London. You will live alongside international students, make life-long friends and return home with a new perspective on the world and the life skills that employers are looking for.

**Studying at Roehampton
gives you the best of
both worlds; a welcoming
campus community
and easy access to
central London.**

London's campus university



Barnes to Waterloo



Your Campus

With a history dating back over 175 years, Roehampton's four Colleges create a beautiful 54-acre parkland campus, with historic buildings alongside modern, cutting-edge facilities.

You can enjoy our excellent campus facilities including a state-of-the-art library, computer and esports suites, dance and drama studios and laboratories for sports and biosciences. After class you can keep fit in our on-campus gym, catch up with your new friends in our organic coffee shop or enjoy the sunshine on Froebel lawn.

Our location in leafy south west London, welcoming campus and 24/7 security all give you extra reassurance of safety in London.

54

acre parkland
campus

30

minutes to
central London

7

miles to
London's
West End

4

friendly
Colleges

1

opportunity
of a lifetime





Academic Programme

Our summer modules make the most of our proximity to the city centre, and offer you the chance to experience London from a critical, academic perspective. With London as the backdrop to study, the city functions as a living classroom.

Credit Transfer

Each Roehampton summer module carries 10 or 20 UK credits. You will receive a transcript at the end of your studies, which your home University will use to transfer these credits to your academic record back home.

You will choose one module per three week academic session. Modules may include:

- **Media, City and Cultural Capital**
Department of Media, Culture & Language
- **Gods and Heroes of Classical Mythology**
Department of Humanities
- **From Renaissance to Abstraction: The History of Art in London Museums**
Department of Humanities
- **Modern Greece: Language and Culture**
Department of Humanities
- **Introduction to the London Stage**
Department of Drama, Theatre & Performance
- **Shakespeare and the London Stage**
Department of Drama, Theatre & Performance
- **Two Children – Options and Decisions in English Education**
School of Education
- **Londonopolis: Exploring the Global City**
Department of Social Sciences
- **Illegal Economies**
Department of Social Sciences
- **Hidden London**
Department of English & Creative Writing
- **Magic, Murder and Mystery in London Literature**
Department of English & Creative Writing
- **The Psychology of Art**
Department of Psychology
- **The Psychology of Murder**
Department of Psychology

Please note that not all modules will run each year – check our website for up to date module information, syllabi and credits. roehampton.ac.uk/roehamptonabroad/summer-school

Your Student Experience

Arrivals and Orientation Programme

To help you settle into life at Roehampton we will provide:

- Heathrow Airport collection service
- Full orientation programme
- London scavenger hunt

Guaranteed on-campus housing

- Living with summer school students
- Private bedrooms in shared flats
- Shared kitchen facilities

Roehampton Abroad Social Programme

In addition to the great on-campus events and activities you can take part in the social programme. Designed for international students with a qualified tour guide past trips have included:

- Oxford and the Cotswolds
- The Tower of London
- Hampton Court Palace

Summer in London

With classes only running Monday – Thursday you will have plenty of time to enjoy London. The Roehampton Abroad team will give you plenty of tips and recommendations to make the most of your time in the city.



What our students say...

"The best thing about Roehampton is its diversity. You get to know people who come from all over the world, experience new cultures and learn new languages."

"The location, you get the best of both worlds – a campus feel but very close to central London with so much going on!"

"At Roehampton, I loved the connections I made, how close I was to London and having the ability to take classes not offered at my home university."

"Having a great community of people to support me. It's so easy to travel everywhere, such a great location."

Supporting You

With a supportive campus environment, tailored events and activities and support from your dedicated Roehampton Abroad team – the Summer School will allow you to make the most of your time in London.



Roehampton Abroad

Roehampton Abroad is your dedicated on-campus study abroad team, on hand to support you. We will advise you throughout the application process, help you to prepare for arrival, support you during your time on campus and be your first point of contact until it is time for your adventure in London to end.



Academic Support

The academic system might be a little different than in your home country. The Academic Achievement team run drop-in sessions and writing skills workshops to help you succeed academically.



State-of-the-Art Library

The world-class University of Roehampton Library is staffed by a friendly and dedicated team who are there to help you. As a Roehampton student you will be able to enjoy all the benefits of our resources including:

- Thousands of online resources
- Private study rooms
- Learning Skills Hub



Disabilities and Dyslexia Support

- Experienced on-campus team
- Accessible accommodation and classrooms
- Personalised support to meet your needs

We will ask you to inform us of your needs in advance so we can make necessary adjustments for you – all information will be kept strictly confidential and will only be used to support your studies.



Your Wellbeing

Student Wellbeing Officers are available to provide you with confidential emotional and practical wellbeing support, including signposting you to other relevant support services.

- Wellbeing drop-ins
- Counselling services
- Chaplaincy pastoral care

Application and Admissions

How to Apply

You can apply online by visiting our website

roehampton.ac.uk/roehamptonabroad/summer-school

Application Deadline

1 April

Application Requirements

Applicants should:

- Have completed high school or equivalent
- Have a minimum 2.8 GPA (out of 4) or equivalent
- Have approval from their home university (where appropriate)
- Be 18 years of age or older
- Have achieved a minimum of IELTS 6.0 or equivalent proof of English Language (where necessary)

Programme Dates and Costs

For full up-to-date details please visit

roehampton.ac.uk/roehamptonabroad/summer-school

If you are joining us from a partner institution please speak to your home school advisor for fee information.

Contact Us

The Roehampton Abroad team are available via:

Email: roehamptonabroad@roehampton.ac.uk

Phone: +44 (0)20 8392 3471

In person: we regularly travel overseas and would love to meet you – email us find out where we'll be next!

Our campus helps us provide a close-knit community feel for our students and a peaceful environment in which to study and live. At Roehampton you are valued as an individual.

University of Roehampton

Roehampton Lane | London | SW15 5PJ | UK

roehampton.ac.uk

Email: roehamptonabroad@roehampton.ac.uk

Phone: +44 (0)20 8392 5009



@roehamptonuni



roehamptonabroad



/roehampton.uni



uni_roehampton

This document was accurate at the time of going to print, January 2019. It is important therefore that you check the University website for updates as some information is subject to change.